

High economic efficiency

Super elastic tyres for indoor and outdoor use

Reach mast principle for narrow aisles in warehouse

Side facing seat offers excellent visibility even when transporting high loads

Generous cockpit with plenty of legroom and SOLO-PILOT



ETV C16/ETV C20

Electric Reach Truck (1600, 2000 kg)

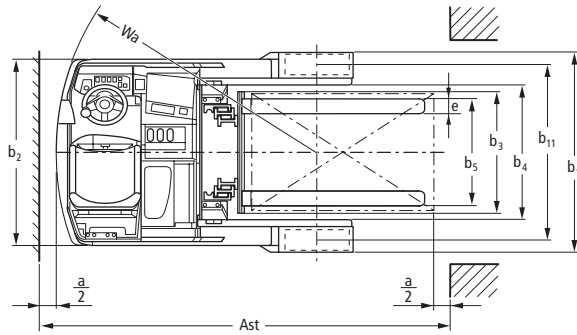
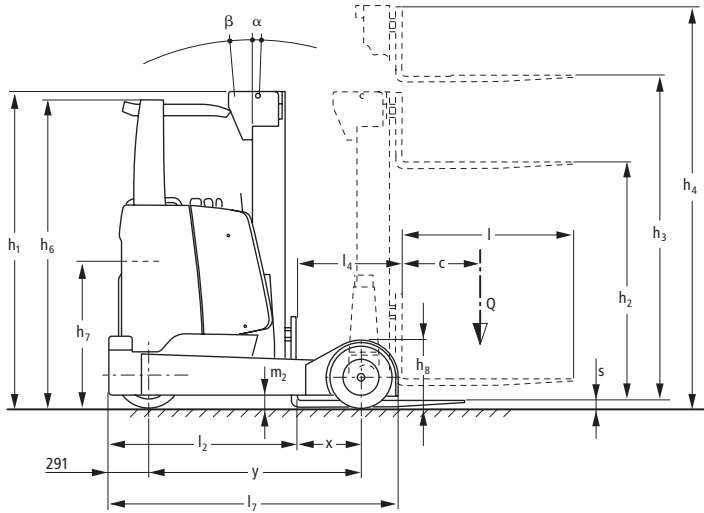
Super elastic tyres, generous legroom, space-saving design, high performance data and ergonomically optimised working conditions. These are the outstanding features of the Jungheinrich ETV C16/ETV C20 reach truck.

The advantages:

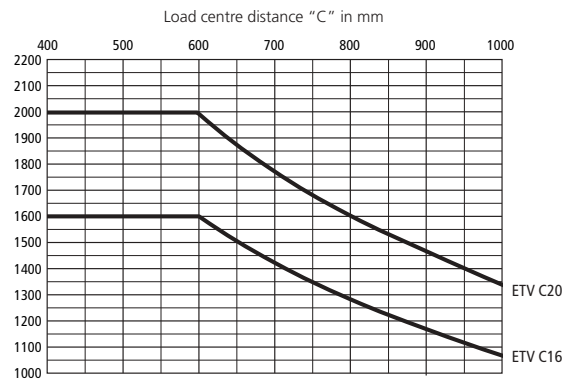
- Universally applicable for both indoor and outdoor use on different types of surface. Suitable for working on a smooth concrete floor in the warehouse or a bumpy asphalt surface for lorry loading/unloading.
- Space-saving through narrow working aisle widths from 2855 mm (according to VDI when picking up Euro pallets lengthways).
- Higher throughput efficiency – at the same time reduction of service requirements – through constant use of 3-phase AC technology.
- Easy, intuitive handling with ergonomically arranged displays/controls. Arrangement and design of the instruments contribute towards safety as much as the excellent visibility.

The Jungheinrich reach trucks ETV C16/ETV C20 thus provide the best preconditions for economic stacking and retrieval at high lift heights and in the most confined spaces. No matter whether for working in pallet or continuous racking, whether for single shift or multi-shift applications or frequent outdoor use with the comfortable weatherproof cabin (optional) – the reach trucks ETV C16/ETV C20 provide the ideal solution for every application.

ETV C16/ETV C20



Capacity



Mast table ETV C16/ETV C20					
Designation	Closed mast height h_1 mm	Lift height h_3 mm	Free lift h_2 mm	Extended mast height h_4 mm	Fork tilt forward/backward α°/β°
Two-stage ZT (ETV C16)	1950	2900	80	3544	2/5
	2050	3100	80	3744	2/5
	2200	3400	80	4044	2/5
	2300	3600	80	4244	2/5
	2400	3800	80	4444	2/5
	2500	4000	80	4644	2/5
Three-stage DZ (ETV C16)	2700	4400	80	5044	2/5
	1950	4250	1306	4894	2/5
	2050	4550	1406	5194	2/5
	2200	5000	1556	5644	2/5
	2300	5300	1656	5944	2/4
	2400	5600	1756	6244	2/4
	2500	5900	1856	6544	2/4
Three-stage DZ (ETV C20)	2600	6200	1956	6844	2/4
	2700	6500	2056	7144	2/4
	2200	4700	1470	5446	2/5
	2300	5000	1570	5746	2/5
	2400	5300	1670	6046	2/4
	2500	5600	1770	6346	2/4
	2600	5900	1870	6646	2/4
	2700	6200	1970	6946	2/4
2900	6800	2170	7546	2/4	
3100	7400	2370	8146	2/4	

Technical Data in line with VDI 2198 as at: 09/2005

Identification	1.1	Manufacturer (abbreviation)	Jungheinrich	Jungheinrich	Jungheinrich	Jungheinrich	1.1	
	1.2	Manufacturer's type designation	ETV C16 DZ	ETV C16 DZ	ETV C20 DZ	ETV C20 DZ	1.2	
	1.2	G = fork; E = integrated sideshift	G	GE	G	GE	1.2	
	1.3	Drive (electric – battery or mains, diesel, petrol, fuel gas, manual)	electric	electric	electric	electric	1.3	
	1.4	Type of operation (hand, pedestrian, standing, seated, order picker)	seated	seated	seated	seated	1.4	
	1.5	Load capacity/rated load Q (t)	1.6	1.6	2	2	1.5	
	1.6	Load centre distance c (mm)	600	600	600	600	1.6	
	1.8	Load distance, centre of drive axle to fork x (mm)	338 ¹⁾	308 ¹⁾	388 ¹⁾	359 ¹⁾	1.8	
	1.8	Mast pushed forward x ₁ (mm)	300	300	300	300	1.8	
1.9	Wheelbase y (mm)	1414	1414	1518	1518	1.9		
Weights	2.1	Service weight incl. battery (see line 6.5) kg	3480	3510	3820	3850	2.1	
	2.3	Axle loading, unladen front/rear kg	2160/1320	2180/1330	2140/1680	2160/1690	2.3	
	2.4	Axle loading, fork advanced, laden front/rear kg	610/4470	620/4490	460/5360	470/5380	2.4	
	2.5	Axle loading, fork retracted, laden front/rear kg	1830/3250	1840/3270	1750/4070	1760/4090	2.5	
	Wheels, Chassis	3.1	Tyres (solid rubber, superelastic, pneumatic, polyurethane)	superelastic	superelastic	superelastic	superelastic	3.1
3.2		Tyre size, front	18x7-8	18x7-8	200/50-10	200/50-10	3.2	
3.3		Tyre size, rear	18x7-8	18x7-8	200/50-10	200/50-10	3.3	
3.5		Wheels, number front/rear (x = driven wheels)	1x/2	1x/2	1x/2	1x/2	3.5	
3.7		Track width, rear b ₁₁ (mm)	1190	1190	1235	1235	3.7	
Basic Dimensions	4.1	Mast/fork carriage tilt forward/backward α/β (°)	2/4 ²⁾	2/4 ²⁾	2/4 ²⁾	2/4 ²⁾	4.1	
	4.2	Lowered mast height h ₁ (mm)	2300	2300	2400	2400	4.2	
	4.3	Free lift h ₂ (mm)	1656	1656	1670	1670	4.3	
	4.4	Lift height h ₃ (mm)	5300	5300	5300	5300	4.4	
	4.5	Extended mast height h ₄ (mm)	5944	5944	6046	6046	4.5	
	4.7	Overhead load guard (cab) height h ₆ (mm)	2270	2270	2295	2295	4.7	
	4.8	Seat height/standing height h ₇ (mm)	1075	1075	1100	1100	4.8	
	4.10	Height of wheel arms h ₈ (mm)	462	462	464	464	4.10	
	4.19	Overall length l ₁ (mm)	2504 ¹⁾	2564 ¹⁾	2546 ¹⁾	2572 ¹⁾	4.19	
	4.20	Length to face of forks l ₂ (mm)	1354 ¹⁾	1414 ¹⁾	1396 ¹⁾	1422 ¹⁾	4.20	
	4.21	Overall width b ₁ /b ₂ (mm)	1340/1238	1340/1238	1438/1238	1438/1238	4.21	
	4.22	Fork dimensions s/e/l (mm)	40/120/1150	40/120/1150	50/140/1150	50/140/1150	4.22	
	4.23	Fork carriage ISO 2328, class/type A, B	2/B	2/B	2/B	2/B	4.23	
	4.24	Fork carriage width b ₃ (mm)	800	800	800	800	4.24	
	4.25	Width over forks b ₅ (mm)	356/737	356/737	356/737	356/737	4.25	
	4.26	Distance between support arms/loading surfaces b ₄ (mm)	900	900	900	900	4.26	
	4.28	Reach distance l ₄ (mm)	638 ¹⁾	608 ¹⁾	688 ¹⁾	659 ¹⁾	4.28	
	4.31	Ground clearance, laden, under mast m ₁ (mm)	90	90	90	90	4.31	
	4.32	Ground clearance, centre of wheelbase m ₂ (mm)	90 ³⁾	90 ³⁾	105 ³⁾	105 ³⁾	4.32	
4.33	Aisle width for pallets 1000x1200 crossways Ast (mm)	2798/2567 ⁵⁾	2821/2597 ⁵⁾	2867/2623 ⁵⁾	2888/2652 ⁵⁾	4.33		
4.34	Aisle width for pallets 800x1200 lengthways Ast (mm)	2855/2767 ⁵⁾	2883/2797 ⁵⁾	2916/2823 ⁵⁾	2942/2852 ⁵⁾	4.34		
4.35	Truck diagonal D (mm)	2240	2240	2347	2347	4.35		
4.37	Turning radius Wa (mm)	1705	1705	1810	1810	4.35		
4.37	Length across wheel arms l ₇ (mm)	1953	1953	2060	2060	4.37		
Performance Data	5.1	Travel speed, laden/unladen km/h	11.8/11.8 ⁴⁾	11.8/11.8 ⁴⁾	11.8/11.8 ⁴⁾	11.8/11.8 ⁴⁾	5.1	
	5.2	Lift speed, laden/unladen m/s	0.34/0.64	0.34/0.64	0.28/0.52	0.28/0.52	5.2	
	5.3	Lowering speed, laden/unladen m/s	0.5	0.5	0.5	0.5	5.3	
	5.4	Reach speed, laden/unladen m/s	0.2 ²⁾	0.2 ²⁾	0.12 ²⁾	0.12 ²⁾	5.4	
	5.7	Gradient performance, laden/unladen %	8/12	8/12	6/10	6/10	5.7	
	5.8	Max. gradient performance, laden/unladen %	10/15	10/15	10/15	10/15	5.8	
	5.9	Acceleration time, laden/unladen s	4.8/4.3	4.8/4.3	5.4/4.6	5.4/4.6	5.9	
	5.10	Service brake	mech./hydraul.	mech./hydraul.	mech./hydraul.	mech./hydraul.	5.10	
	E-Motor	6.1	Drive motor rating S ₂ 60 min. kW	6	6	6	6	6.1
		6.2	Lift motor rating at S ₃ 15 % kW	12	12	12	12	6.2
6.3		Battery acc. to DIN 43531/35/36 A, B, C, no	EN 60254-2 B	EN 60254-2 B	EN 60254-2 B	EN 60254-2 B	6.3	
6.4		Battery voltage, nominal capacity K ₅ V/Ah	48/560 ¹⁾	48/560 ¹⁾	48/560 ¹⁾	48/560 ¹⁾	6.4	
6.5		Battery weight kg	937 ¹⁾	937 ¹⁾	937 ¹⁾	937 ¹⁾	6.5	
Others	8.1	Type of drive control	MOSFET control AC	MOSFET control AC	MOSFET control AC	MOSFET control AC	8.1	
	8.2	Operating pressure for attachments bar	150	150	150	150	8.2	
	8.3	Oil volume for attachments l/min	15	15	15	15	8.3	
	8.4	Sound level at driver's ear according to EN 12053 dB(A)	70	70	70	70	8.4	
1) other battery sizes change these values 2) dependent on mast 3) with nom. load centre wheelbase 4) in fork direction 11.0/11.0 km/h 5) for floor storage								

This specification sheet according to VDI regulation 2198 only provides technical values for the standard truck. Non-standard tyres, different masts, additional equipment, etc. could produce other values. Right reserved for technical changes and improvements.

Make use of the advantages

High-performance mast

Jungheinrich masts provide maximum safety and space utilisation to high lift heights:

- Excellent visibility towards load.
- Integrated sideshift (optional).
- Lowest clearance heights together with high lift heights.
- Sensitive mast tilt.
- Extremely long lifespan through high-quality sections.
- High residual capacity to high lift heights.
- Lift heights up to 7400 mm.
- Integrated hose routing also for auxiliary hydraulics (no hose reel).

Ergonomic operator cab

The operator compartment provides ideal working conditions for highest performance and ease of operation.

- Step plate can be seen from above.
- Adjustable steering wheel.



Ergonomic operator cab

- Important operating elements are accessible without reaching round.
- Generous available space.
- Hydraulic 180° steering.
- SOLO-PILOT to control lifting/lowering, travel direction, sideshift (optional) and horn activation. Mast reach and mast tilt controlled by two separate levers.
- LISA (LC information and service display) for key operating conditions (e. g. hour-meter and battery discharge) and for travel and lift parameter setting.

3-phase AC technology

Powerful 3-phase AC technology for simultaneous travel, lift and steering drive offers a range of advantages compared with traditional direct current motors.

- Powerful acceleration.
- Quick reversing without "moment of reflection".



SOLO-PILOT

- Comfort seat made of genuine leather, adjustable to any driver (sitting position/backrest/body weight).
- Sideways facing arrangement offers outstanding visibility even when transporting heavy loads.
- Many depositing facilities.

- High operational availability through maintenance-free motors without carbon brushes.
- Longer operating times through energy reclamation when speed is taken back.



Weatherproof cabin comfort 2

Weatherproof cabins (optional)

- Weatherproof cabin available in three designs (economy/comfort 1/comfort 2) provides excellent protection for frequent outdoor use.
- Economy offers roof and front screen.
- Comfort 1 offers roof, front and side screens for frequent use in rainy conditions.
- Comfort 2 offers roof, front and side screens and door for all-round protection.

Jungheinrich UK Ltd.

Head Office:

Sherbourne House
Sherbourne Drive
Tilbrook
Milton Keynes MK7 8HX
Telephone 01908 363100

info@jungheinrich.co.uk
www.jungheinrich.co.uk

ISO 9001, ISO 14001
Certification of Quality and
Environment Management.



Jungheinrich trucks
conform to the European
Safety Requirements.



JUNGHEINRICH
Well worthwhile