

Ergonomic order picking at optimum posture through raising load section

Optimised working processes through direct operator/load correlation

Effortless handling through JetPilot (optional)

Excellent energy efficiency through maintenance-free 3-phase AC drive motor

Automatic speed reduction during curve travel through Curve Control (optional)

High capacity scissor lift load section



ECE 320

Horizontal order picker with scissor lift load section (2000 kg)

The Jungheinrich horizontal order picker ECE 320 is particularly suitable for applications where, apart from time and cost optimisation during order picking, the ergonomic depositing of goods on the pallet plays an important part.

Its excellent technical efficiency is determined by the 24 V 3-phase AC drive motor. Its advantages: powerful acceleration and high end speed. At the same time considerable energy saving, prolonged application time and low maintenance (through omission of carbon brushes). This is facili-

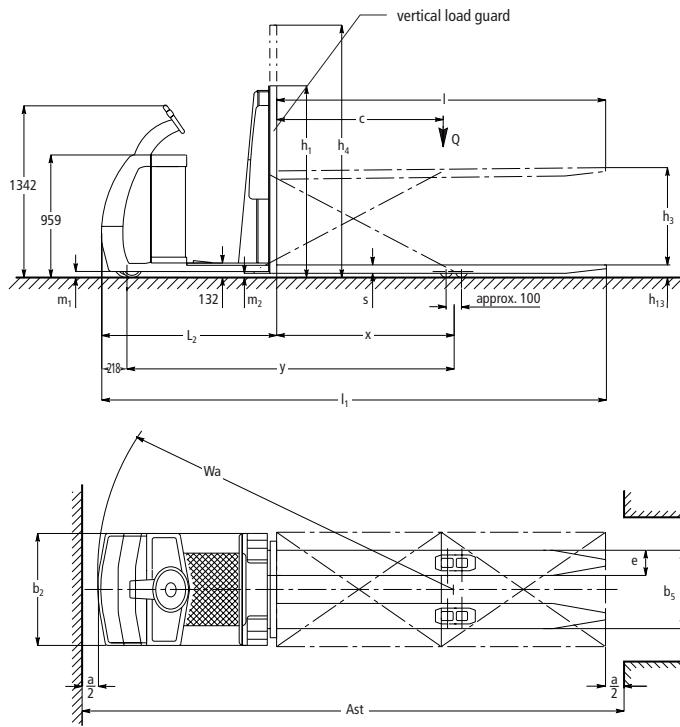
tated by an optimised efficiency factor, fine-tuning between drive motor and drive control as well as regenerative braking.

The immediate proximity of operator to load and the fixed stand-on platform are the "pivotal points" for safe and efficient order picking. The scissor lift load section of the ECE 320 accepts 2 t loads to be lifted to a height of 700 mm.

Dependent on the application requirement, the ECE 320 can be equipped with either electric tiller steering or "JetPilot"

steering wheel (optional). The advantages of electric tiller steering: effortless steering with approx. only 60° tiller lock for 90° steering lock. Operator and tiller always remain safely within the truck contours. The advantages of the JetPilot steering wheel: first-class travel comfort through intuitive operation and secure hold. No twisting of the body on bends (thus relieving neck and spine). One-handed operation and automatic adjustment to straight travel at every return.

ECE 320



Technical Data in line with VDI 2198 as at: 09/2005

Identification	1.1	Manufacturer (abbreviation)		Jungheinrich	1.1	
	1.2	Manufacturer's type designation		ECE 320	1.2	
	1.3	Drive (electric, Diesel, petrol, fuel gas, mains electric, manual)		electric	1.3	
	1.4	Type of operation (hand, pedestrian, standing, seated, order picker)		order picker	1.4	
	1.5	Load capacity/rated load	Q (t)	2.0	1.5	
	1.6	Load centre distance	c (mm)	1200	1.6	
	1.8	Load distance, centre of drive axle to fork	x (mm)	1730 ¹⁾	1.8	
	1.9	Wheelbase	y (mm)	2850 ¹⁾	1.9	
	Weights	2.1	Service weight incl. battery (see line 6.5)	kg	1490	2.1
2.2		Axle loading, laden front/rear	kg	1540/1900	2.2	
2.3		Axle loading, unladen front/rear	kg	1050 / 430	2.3	
Wheels, Chassis	3.1	Tyres (solid rubber, superelastic, pneumatic, polyurethane)		Vulcollan	3.1	
	3.2	Tyre size, front		230 x 78	3.2	
	3.3	Tyre size, rear		85 x 75	3.3	
	3.4	Additional wheels (dimensions)		180 x 65	3.4	
	3.5	Wheels, number front/rear (x = driven wheels)		2-1x/4	3.5	
	3.7	Track width, rear	b ₁₁ (mm)	375	3.7	
	Basic Dimensions	4.2	Lowered mast height	h ₁ (mm)	1505	4.2
4.4		Lift height	h ₃ (mm)	700	4.4	
4.15		Lowered height	h ₁₃ (mm)	90	4.15	
4.19		Overall length	l ₁ (mm)	3750	4.19	
4.20		Length to face of forks	l ₂ (mm)	1350	4.20	
4.21		Overall width	b ₁ /b ₂ (mm)	810	4.21	
4.22		Fork dimensions	s/e/l (mm)	70/195/2400	4.22	
4.25		Width over forks	b ₅ (mm)	570	4.25	
4.32		Ground clearance, centre of wheelbase	m ₂ (mm)	25	4.32	
4.34		Aisle width for pallets 800 x 1200 lengthways	Ast (mm)	4113	4.34	
4.35		Turning radius	Wa (mm)	3130 ¹⁾	4.35	
Performance Data		5.1	Travel speed, laden/unladen	km/h	9.6/11.2	5.1
		5.2	Lift speed, laden/unladen	m/s	0.08/0.11	5.2
	5.3	Lowering speed, laden/unladen	m/s	0.13/0.13	5.3	
	5.10	Service brake		electro mechanic	5.10	
E-Motor	6.1	Drive motor rating S ₂ 60 min.	kW	2.5	6.1	
	6.2	Lift motor rating at S ₃ 15 %	kW	1.5	6.2	
	6.4	Battery voltage, nominal capacity K ₅	V/Ah	24/420	6.4	
	6.5	Battery weight	kg	370	6.5	
Others	8.1	Type of drive control		3-phase AC technology	8.1	
	8.4	Sound level at driver's ear according to EN 12 053	dB (A)	66	8.4	

1) load section raised: -150 mm

Make use of the advantages

Innovative 3-phase AC technology

Jungheinrich motors in 3-phase AC technology provide you with more productive capacity and reduce your operating costs at the same time. Make use of these advantages:

- High performance efficiency with excellent energy utilisation.
- Powerful acceleration.
- Fast change of travel direction without the usual "pause for thought".
- No carbon brushes – the drive motor is maintenance-free.
- 2-year warranty on drive motor.

Comfortable travel

The Jungheinrich impulse control "Speed-Control" facilitates comfortable, safe travel with adjustment opportunities for every application:



Comfortable travel and fast order picking

- The prescribed speed on the travel switch is maintained in every travel situation – even on ascending and descending gradients.
- 3 travel programs for individual adjustment to any application requirement.
- Regenerative braking with energy reclamation on taking back the travel speed.
- Rapid Drive system for high performance efficiency supplied as standard.

Robust construction for the most intensive applications

- Chassis made of high-quality 8 mm sheet steel.
- Extra high pulled up chassis apron on front cover.
- Reinforced scissor kinematics – applied for labour-intensive utilisation.

Well informed at any time

Extensive display and setting instruments provide a complete overview at any time:

- "CanDis" (optional) informs on battery charge state, operating hours and fault codes.
- Truck activation via PIN and choice of 3 travel programs via keyboard (optional).
- Adjustable travel parameters via CanDis and CanCode (optional).

Individual steering

Different steering concepts facilitate tailor-made application:



JetPilot – exclusive for Jungheinrich

- Electric tiller steering with steering reduction ratio (optional).
- Electric steering with Jungheinrich JetPilot (optional).

Speed reduction during curve travel (Jungheinrich Curve Control) is optionally available for electric steering variants. This ensures maximum safety.

Additional equipment

Numerous accessories provide individual adjustment to your application requirements:

- Pedestrian operation from both sides in the backrest.
- Different designs of backrests.
- Additional impact protection made of steel and/or rubber.
- Holder for radio data transmission components.
- Holder for foil rolls.

Jungheinrich UK Ltd.

Head Office:

Sherbourne House
Sherbourne Drive
Tilbrook
Milton Keynes MK7 8HX
Telephone 01908 363100

info@jungheinrich.co.uk
www.jungheinrich.co.uk

ISO 9001, ISO 14001
Certification of Quality and
Environment Management.



Jungheinrich trucks
conform to the European
Safety Requirements.



JUNGHEINRICH
Well worthwhile