

Ergonomic order picking at optimum posture through raising load section

Optimised working processes through direct operator/load correlation

Easy handling through JetPilot (optional)

Excellent energy utilisation through maintenance-free 3-phase AC drive motor

Automatic speed reduction during curve travel through Curve Control (optional)

Order picking from 2nd racking level through raising stand-on platform (optional)



ECE 310

Horizontal order picker with raising load section (1000 kg)

The Jungheinrich horizontal order picker ECE 310 is particularly suitable in applications where apart from time/cost optimisation the ergonomic depositing of goods on the pallet is also of importance.

Its excellent technical efficiency is determined by a 24 V drive motor in 3-phase AC technology. Its advantages: powerful acceleration and high end speed with at the same time significant energy saving, prolonged operating time and minimised maintenance effort (no carbon brushes). This is made possible through an optimised efficiency factor, favourable adjustment between drive motor and drive control as well as regenerative braking.

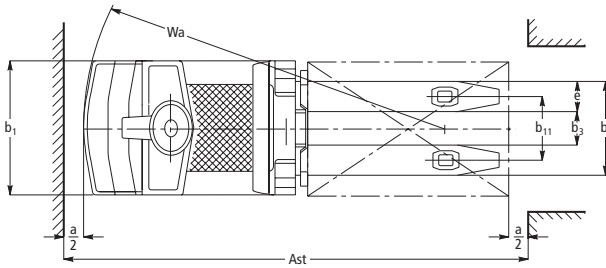
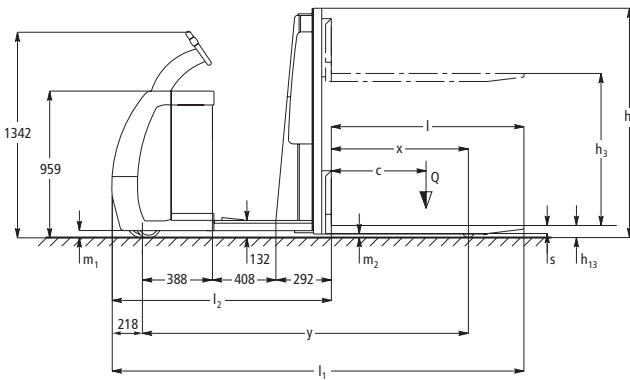
The immediate proximity of operator to load and the fixed stand-on platform are the pivotal points for safe and efficient order picking. The load section with a capacity of 1000 kg can be raised up to 700 mm, so that the operator is able to deposit the load comfortably at the "correct" height. The raising stand-on platform (optional) facilitates comfortable order picking even at the second racking level.

Dependent on the application requirement, the ECE 310 can be equipped with three different steering choices. Apart from manual tiller steering, electric tiller steering or steering wheel control "Jet-Pilot" are optionally available.

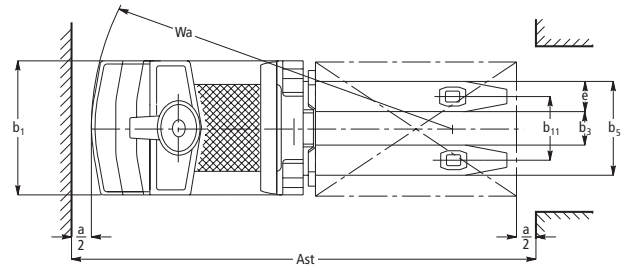
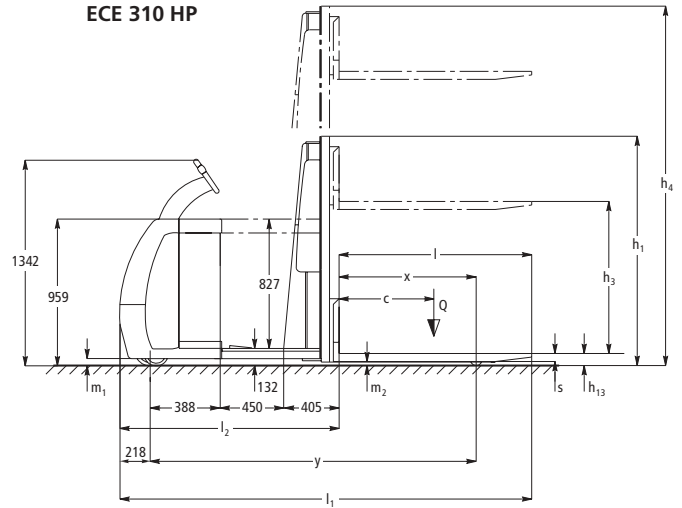
Advantages of electric tiller steering: effortless steering with approximately only 60° tiller lock for 90° steering lock. Operator and tiller always remain safely within the truck contours. Advantages of the JetPilot steering wheel: first-class travel comfort through intuitive operation and secure hold. No need to turn the body on corners. One-handed operation; automatic return of steering wheel to straight travel at every deceleration.

ECE 310

ECE 310



ECE 310 HP



Technical Data in line with VDI 2198 as at: 09/2005

Identification	1.1	Manufacturer (abbreviation)	Jungheinrich	Jungheinrich	1.1		
	1.2	Manufacturer's type designation	ECE 310	ECE 310 (HP)	1.2		
	1.3	Drive (electric – battery or mains, diesel, petrol, fuel gas, manual)	electric	electric	1.3		
	1.4	Type of operation (hand, pedestrian, standing, seated, order picker)	order picker	order picker	1.4		
	1.5	Load capacity/rated load	Q (t)	1	1	1.5	
	1.6	Load centre distance	c (mm)	600	600	1.6	
	1.8	Load distance, centre of drive axle to fork	x (mm)	800	800	1.8	
	1.9	Wheelbase	y (mm)	1888	1888	1.9	
	Weights	2.1	Service weight incl. battery (see line 6.5)	kg	1244	1346	2.1
2.2		Axle loading, laden front/rear	kg	1296/956	1327/1020	2.2	
2.3		Axle loading, unladen front/rear	kg	372/872	420/926	2.3	
Wheels, Chassis	3.1	Tyres (solid rubber, superelastic, pneumatic, polyurethane)	Vulkollan	Vulkollan	3.1		
	3.2	Tyre size, front	230 x 78	230 x 78	3.2		
	3.3	Tyre size, rear	85 x 95	85 x 95	3.3		
	3.4	Additional wheels (dimensions)	180 x 65	180 x 65	3.4		
	3.5	Wheels, number front/rear (x = driven wheels)	2-1 x/2	2-1 x/2	3.5		
	3.6	Track width, front	b ₁₀ (mm)	500	500	3.6	
	3.7	Track width, rear	b ₁₁ (mm)	380	380	3.7	
Basic Dimensions	4.2	Lowered mast height	h ₁ (mm)	1585	1300	4.2	
	4.4	Lift height	h ₃ (mm)	700	700	4.4	
	4.5	Extended mast height	h ₄ (mm)	–	2080	4.5	
	4.9	Height of tiller in drive position min./max.	h ₁₄ (mm)	1342	1342	4.9	
	4.15	Lowered height	h ₁₃ (mm)	90	90	4.15	
	4.19	Overall length	l ₁ (mm)	2456	2611	4.19	
	4.20	Length to face of forks	l ₂ (mm)	1306	1461	4.20	
	4.21	Overall width	b ₁ /b ₂ (mm)	810/–	810/–	4.21	
	4.22	Fork dimensions	s/e/l (mm)	60/180/1150	60/180/1150	4.22	
	4.25	Width over forks	b ₅ (mm)	560	560	4.25	
	4.32	Ground clearance, centre of wheelbase	m ₂ (mm)	25	25	4.32	
	4.34	Aisle width for pallets 800 x 1200 lengthways	Ast (mm)	2876 ¹⁾	3009 ¹⁾	4.34	
	4.35	Turning radius	Wa (mm)	2110	2243	4.35	
	Performance Data	5.1	Travel speed, laden/unladen	km/h	8.45/10.4	8.45/10.4	5.1
		5.2	Lift speed, laden/unladen	m/s	0.08/0.11	0.08/0.11	5.2
5.3		Lowering speed, laden/unladen	m/s	0.12/0.05	0.12/0.05	5.3	
5.10		Service brake		electro mechanic	electro mechanic	5.10	
E-Motor	6.1	Drive motor rating S ₂ 60 min.	kW	2.5	2.5	6.1	
	6.2	Lift motor rating at S ₃ 15 %	kW	1.5	1.5	6.2	
	6.4	Battery voltage, nominal capacity K ₅	V/Ah	24/420	24/420	6.4	
	6.5	Battery weight	kg	370	370	6.5	
	8.1	Type of drive control		3-phase AC technology	3-phase AC technology	8.1	
Others	8.4	Sound level at driver's ear according to EN 12 053	dB(A)	66	66	8.4	

1) diagonal according to VDI: +166 mm

Make use of the advantages

Innovative 3-phase AC technology

Jungheinrich motors in 3-phase AC technology provide you with more performance efficiency and reduce your operating costs at the same time. Make use of these advantages:

- High performance efficiency with excellent energy utilisation.
- Powerful acceleration.
- Fast change of travel direction without the usual "pause for thought".
- No carbon brushes – the drive motor is maintenance-free.
- 2-year warranty on drive motor.

Comfortable travel

The Jungheinrich impulse control "Speed-Control" facilitates comfortable, safe travel with adjustment opportunities for every application:

- The prescribed speed on the travel switch is maintained in every travel situation – even on ascending and descending gradients.
- 3 variable travel programs for individual adjustment to any application requirement.
- Regenerative braking with energy reclamation when taking back the travel speed.

Robust construction for the most intensive applications

- Chassis made of high-grade 8 mm sheet steel.
- Extra high pulled up chassis apron on front cover.

Comfortable and safe order picking

The hydraulically raised stand-on platform (optional) provides the best preconditions for frequent replenishment and order picking from the second racking level:

- Fast and safe lifting of the operator up to battery cover height.
- Effortless operation of platform via foot pedal, leaving the hands free for order picking.
- High order picking efficiency through immediate proximity of operator to load.



Order picking from second racking level with raised stand-on platform

Well informed at any time

Extensive display and setting instruments provide a complete overview at any time.

- "CanDis" (optional) informs on battery charge state, operating hours and fault codes.
- Truck activation via PIN and choice of 3 travel programs via keyboard (optional).
- Adjustable travel parameters via CanDis and CanCode (optional).

Individual steering

3 different steering concepts facilitate tailor-made application:

- Mechanical tiller steering (standard).
- Electric tiller steering with steering reduction ratio (optional).



JetPilot – exclusive for Jungheinrich

- Electric steering with Jungheinrich JetPilot (optional). Speed reduction during curve travel (Jungheinrich Curve Control) is optionally available for electric steering variants. This ensures maximum safety.

Additional equipment

Extensive accessories provide individual adjustment to your application requirements:

- Rapid drive system for even higher performance efficiency.
- Pedestrian operation from both sides in the backrest.
- Different designs of backrest.
- Additional impact protection made of steel and/or rubber.
- Various accessories for order picking from second racking level.
- Holder for radio data transmission components.

Jungheinrich UK Ltd.

Head Office:

Sherbourne House
Sherbourne Drive
Tilbrook
Milton Keynes MK7 8HX
Telephone 01908 363100

info@jungheinrich.co.uk
www.jungheinrich.co.uk

ISO 9001, ISO 14001
Certification of Quality and
Environment Management.



Jungheinrich trucks
conform to the European
Safety Requirements.



JUNGHEINRICH
Well worthwhile