

For outdoor and indoor applications

**SERIES**

**HEAVY-DUTY  
COMPACT FRONTLIFT**

4150  
4170

Available in Diesel or LPG

Basic capacities from  
12000 kg to 25000 kg



World-class solutions to logistics problems!

[www.hubtex.com](http://www.hubtex.com)

**HUBTEX.**

## Features

When you need to move heavy loads in a very confined space, the HUBTEX compact frontlift has no rival. Compared with a conventional forklift the HUBTEX compact frontlift stands out by its very compact design with small turning radius. In short: The HUBTEX compact frontlift will be used everywhere where conventional forklifts are ruled out because of their bigger dimensions.

### Further features are:

- spacious driver's cab,
- An optimum all round visibility offers safe driving and handling of loads. The suspended driver's cab is reducing vibrations to a minimum,
- Grab handles, anti-slip steel decking, safety belt, back-up alarm and rotating warning light as well as an optimum distribution of load – even with empty running – guarantee optimum safety for the driver and for all other persons around him,
- designed with the future in mind.



## Ergonomics



Working with the compact frontlift is a real pleasure. Everything is clearly arranged and easily accessible. The comfortable, ergonomic driver's workstation offers more elbow room and optimum all round vision. Joystick control enables lift, lower and tilt motions – all with "fingertip" control. The joystick is comfortable and natural to use. It enables the driver to manage simulta-



neous functions easily and safely, while keeping one hand on the steering wheel. In addition the driver's cab is rubber mounted to reduce noise and vibration to a minimum. A full suspension seat is fitted as standard. Anti-slip steps enable an easy and safe entry to the cabin.

## Maintenance

Modular construction of HUBTEX trucks ensures easy access for servicing and repairs. The low-maintenance hydrostatic drive unit with integrated brake system saves costs and helps to maintain the value of the truck as long as possible.

### Series 4150 (Diesel)

Model	Basic capacity
DKS-120	12000 kg
DKS-150	15000 kg
DKS-200	20000 kg
DKS-250	25000 kg

## Further advantages include

### driving...

The powerful hydrostatic drive is adjustable on the requirements for acceleration and braking.

### chassis...

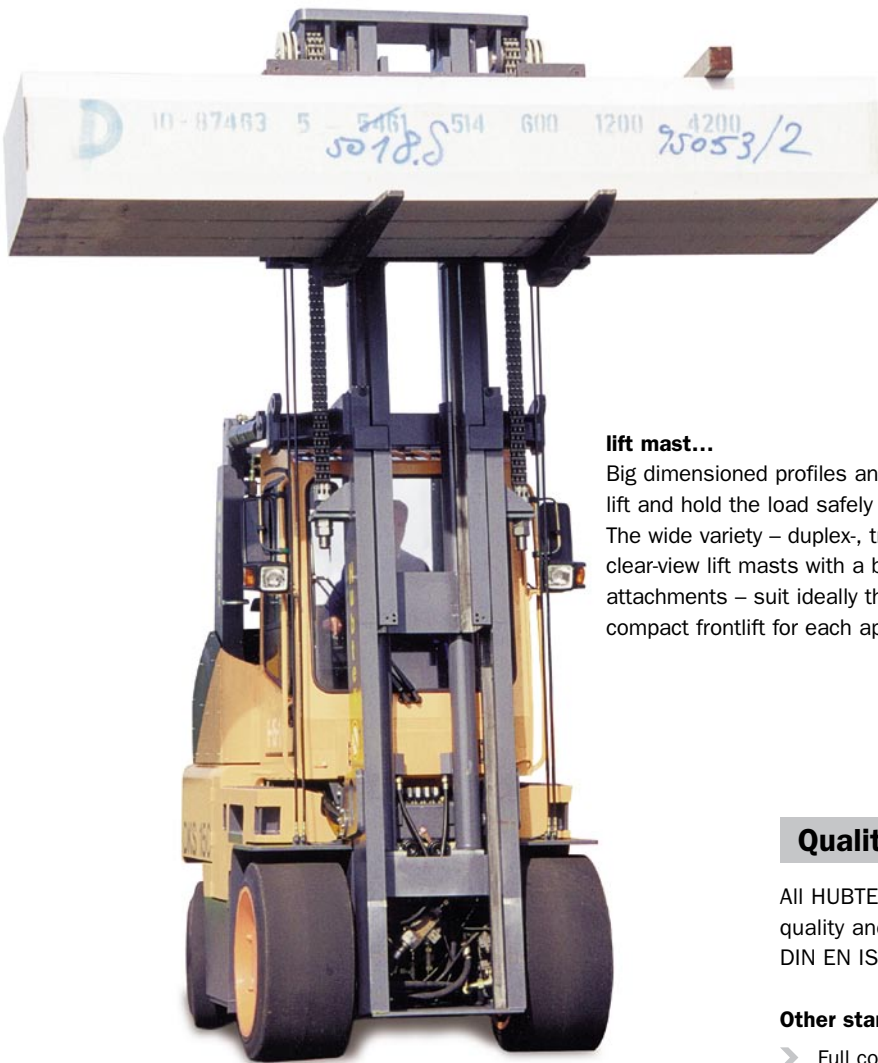
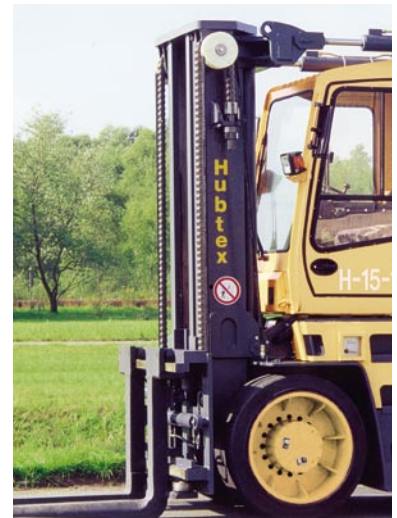
An all-welded overdimensioned solid quality steel construction is prepared for hard operating conditions.

### engine...

Environmentally, low-noise, powerful but economical. The very powerful diesel- or LPG-driven engine is specially developed for industrial trucks and provides more power than needed. Execution of motor according to the latest European exhaust emission standard.

### steering...

The fully hydraulic wheel steering offers an excellent manoeuvrability. The pendulum steering axle enables a big turning angle of the steering wheels.



### lift mast...

Big dimensioned profiles and cylinders lift and hold the load safely in all ranges. The wide variety – duplex-, triplex and clear-view lift masts with a big choice of attachments – suit ideally the HUBTEX compact frontlift for each application.

### Series 4170 (Gas)

Model	Basic capacity
GKS-120	12000 kg
GKS-150	15000 kg
GKS-200	20000 kg
GKS-250	25000 kg

## Quality and Safety



All HUBTEX trucks are built to the highest possible quality and safety standards and HUBTEX has been a DIN EN ISO 9001:2000 certified company.

### Other standards including:

- Full compliance with existing and all known future EU regulations with CE-conformity certificate,
- All compact frontlifts have a full stability test according to ISO 1074 before delivery,
- Hydraulic overload-protection,
- Quality welding according to DIN 18 800 and to the highly acclaimed welding safety certificate DIN 15 018.

body do  
best!" Cicero

# HUBTEX.



**Your reliable partner for Heavy-Duty Compact Frontlifts!**

**HUBTEX Maschinenbau GmbH & Co. KG**

Industriepark West  
Werner-von-Siemens-Str. 8  
36041 Fulda, Germany  
Tel. +49-661-8382-0  
Fax +49-661-8382-120  
[www.hubtex.com](http://www.hubtex.com)

**HUBTEX.**

Technical modification reserved.

Pictures may show options which are not standard equipment.