

Very low maintenance power for the future  
... for indoor and outdoor applications

**ELECTRIC  
MULTIDIRECTIONAL  
SIDELoader**

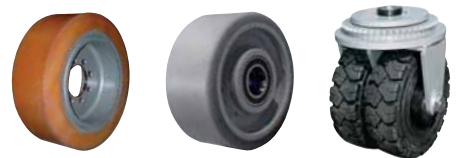
**SERIES**

**2121  
PU-PV-EL**



Basic capacities from  
1500 kg to 3000 kg

*AC technology*



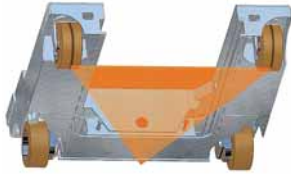
World-class solutions to logistics problems!

**www.hubtex.com**

**HUBTEX.**

## Features

HUBTEX series 2121 is a robust and manoeuvrable sideloaders with multidirectional steering for the handling of loads up to 12 metres long and 2 metres deep. For 2 decades, customers the world over have trusted in the long-term reliability of HUBTEX technology in a diverse range of applications.



### Further advantages include:

- Application of PU tyres for internal use respectively either soft PU or cushioned tyres for combined interior and exterior use,
- The outstanding feature of this series is the well proven articulated frame to compensate uneven surfaces,
- Extremely low loadbed height gives improved utilisation of warehouse height,
- Reduced aisle width with optional roller guidance requires only 100 mm safety clearance per side between truck and racking,
- Fast cycle times are achieved with powerful 48 V, High Torque AC drive and hydraulic motors,
- Stable, strong lift mast with internally reeved hydraulics (No hose reels) are manufactured "in house" and have a high reserve of load capacity, even where large load centres are involved,
- Long term reliability and reduced running costs with high quality proprietary components from well established industrial suppliers,
- Ergonomically designed cabin with good all round view,
- Clearly arranged truck controls,
- Ergonomic joystick design with integrated driving direction preselect means drivers enjoy long periods behind the wheel.



crosswise seat



diagonal seat cabin



lateral seat cabin



stand up cabin



All main driving and hydraulic functions are controlled from a single ergonomically designed joystick developed by HUBTEX. The joystick offers fully proportional lift/lower, mast reach and fork tilt, plus optional fork positioning & teleforks, without moving the hand from this single controller.

## Ergonomics



Working with the series 2121 is a real pleasure. Everything is clearly arranged and easily accessible. Sensitive full power, multidirectional steering with fingertip control give HUBTEX trucks extreme manoeuvrability with millimetre accuracy allowing them to operate quickly and easily in the tightest corners. The comfortable, ergonomic driver's workstation offers more elbow room and optimal all round vision. In addition the driver's cab is rubber mounted to keep noise and vibration to a minimum. A comfortable full suspension seat is also fitted as standard.



## New Generation AC Technology

Based on the very latest motor control technology, series 2121 is equipped with powerful three-phase AC drive motors and pumps, which offers further advantages, such as:

- Very low maintenance enclosed motor construction with improved protection against moisture and dirt, especially suitable for outdoor application, even in poor weather conditions,
- Maintenance free electronic regenerative braking through solid state Mosfet controllers ensures maximum utilisation of battery power,
- 2 heavy-duty High Torque motors ensure optimum control. Starting on a gradient is no problem for the HUBTEX 2121 series truck. An "Anti-Rollback" feature ensures safety and gives the driver confidence,
- Higher final speed and better acceleration,
- Precise driving speed control for accurate positioning,
- No carbon brushes or electric contactors means substantially reduced operating costs,
- No carbon brushes means no danger of motor damage from bad service regimes,
- Solid state Mosfet control (without contactors) means reduced maintenance and improved long term reliability.



Easy service access to all components

### – CAN-BUS –

Communication between our safety system electronics, HUBTEX-Information-Terminal (HIT<sup>2</sup> display), joystick and other truck components is effected via CAN-BUS. This communication interface, utilised for many years by quality road vehicle manufacturers, allows good specification flexibility and higher safety standards to be achieved.

#### Model Basic capacity

Model	Basic capacity
M 15	1 500 kg
M 20	2 000 kg
M 25	2 500 kg
M 30	3 000 kg

## Tyres



Vulkollan (PU)



Soft PU (PV)



Elastic (EL)

## HIT<sup>2</sup> HUBTEX Information Terminal

Modern industrial on-board computer technology on HUBTEX sideloaders allows easy access to service information as follows:

- Password / key code access
- Date / time
- Working hours
- Battery capacity
- Maintenance cycles
- Speed
- Steering programme
- Wheel direction
- Fork tilt indication
- Status mode
- Telediagnostic service (Option)



Advanced driver and engineer information.

## Maintenance

Modern 3-phase brushless drive motors and regenerative braking ensure fast smooth acceleration and deceleration while giving unrivalled economy of battery power. With no motor brushes or brake linings, service costs are appreciably lower and reliability improved. Modular construction of HUBTEX trucks ensures easy access for servicing and repairs even in narrow aisle situations. All assemblies are easily accessible reducing down-time and improving service engineer acceptance.

## Quality and Safety



All HUBTEX trucks are built to the highest possible quality and safety standards and HUBTEX has been a DIN EN ISO 9001:2000 certified company for over 7 years.

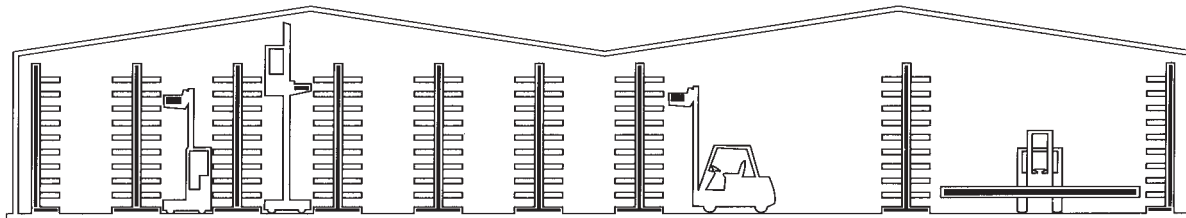
### Other standards including:

- Full compliance with existing and all known future EU regulations,
- All sideloaders have a full stability test to EN 1726-1 before delivery,
- Hydraulic overload-protection and load locking valves in lift cylinders,
- Quality welding to DIN 18 800 and to the highly acclaimed welding safety certificate DIN 15 018.



# HUBTEX.

body do  
best!" Cicero



**HUBTEX sideloaders maximize your storage capacity!**



**Your reliable partner for sideloaders – worldwide!**

**TECHNICAL DETAILS**

height over cabin:	Sh	2470 mm
frame length:	L	2760 / 2950 mm
width till face of fork:	b	664–1020 mm
loadbed width:	NB	800–1600 mm
frame width:	B	b + NB
mast reach:	V	NB + 100 mm
height over loadarm:	Rh	390 (PU/PV) / 495 (EL) mm
loadarm opening:	Ra	1340 mm
clearance:		75 mm
tyres:		PU / PV / EL

**HUBTEX Maschinenbau GmbH & Co. KG**

Industriepark West  
 Werner-von-Siemens-Str. 8  
 36041 Fulda, Germany  
 Tel. +49-661-8382-0  
 Fax +49-661-8382-120  
 www.hubtex.com



Technical modification reserved.  
 Pictures may show options which are not standard equipment.